

Wooden Bridge

Easy

Distance: .5 mile

Average Time: 11 minutes

Both ends of this trail are on the Boundary Trail. This trail is wide and has some excellent spots for cantering. If starting from the pond end, once you cross the bridge you will start to go up a gentle hill. While we consider this an easy trail, if your horse is not used to wooden bridges, it could pose a little bit of a challenge.

Pine Ridge Crossing

Easy

Distance: .7 mile

Average Time: 20 minutes

This trail connects two points of the Boundary trail. One end starts down by the pond and the other side is at the end of Paul's Hill. This trail is easy. There is one area that you do some winding down/up a hill. Deer are frequently spotted on this trail so be aware.

Pine Ridge Crossing

Easy

Distance: .7 mile

Average Time: 20 minutes

This trail connects two points of the Boundary trail. One end starts down by the pond and the other side is at the end of Paul's Hill. This trail is easy. There is one area that you do some winding down/up a hill. Deer are frequently spotted on this trail so be aware.



Trail Descriptions

Stepping Creek

Hard

Distance: 2.0 miles

Average Time: 45 - 60 minutes

Both ends of this trail are accessed from the Boundary Trail. This is by far the most intense trail we have mapped so far. This is due to the many stream crossings that you will encounter. Many of these are crossed by going down into steep gullies where your horse may be sliding down towards the water. Be prepared to dismount your horse to get them across the stream. You will also ride on a nice open field. We ask that you stay along the edge of the field during your ride. This is a great place to open your horse up for a nice canter or even a gallop!

Boundary

Hard

Distance: 2.7 miles

Average Time: 45 - 60 minutes

The Boundary Trail is pretty much the hub for all the other trails. You get a lot of variety on this trail as you will go through thick wooded areas and a large open pasture towards the end. In the pasture we ask that you stay on the side where you will see car tracks. This is an excellent area to open your horse up! This trail has three stream crossings. If you are starting from the pond side of the trail the first stream crossing is pretty easy. The next two are more difficult which is why we classify this as a hard trail. For a nice easier ride, if coming from the pond area take a left onto the Wooden Bridge Trail and head back towards the pond. After you pass both entrances to the Stepping Stone trail you will come to the large open pasture. If you are in a group where some like to run and others don't, we suggest the runners go into the field and the walkers stay on the road. This section is called Paul's Hill because Paul and Fancy love to run and this is the ideal location to do so. We strongly encourage those wanting to run your horse to stay on the path around pasture where you will see vehicle tracks for the safety of the rider and horse.

Oak Valley

Easy

Distance: .4 mile

Average Time: 15 minutes

This trail goes between the Boundary trail and Pond View trail. It wanders through deep woods. If starting from the Boundary trail you can take a right or left onto the Pond View Trail. Pond View Trail is considered a hard trail because of tricky stream crossing. Take a left and you will face this crossing and end up back on the Boundary trail by the dam for the pond. For an easier ride, take a right. Once you get up the little take another right and you will pass a mobile home and end up following a power line path back towards the barn.

Homestead

Easy

Distance: .2 mile

Average Time: 5 minutes

Homestead trail passes a couple old home sites on the property. The primary purpose of this trail is to detour around the ring so that if there is activity going on there you can avoid it. While this trail is short, it is beautiful. This trail will also be the first trail experience for our beginner students!

Deer Creek Run

Moderate

Distance: 1.4 miles

Average Time: 30 minutes

This trail connects the Big Rock Mt and the Stepping Stone trails. It also crosses the Boundary trail. This trail is considered moderate due to the fact that at the Big Rock Mt end there is a stream that must be crossed. The rest of this trail is easy. When travelling from the Big Rock Mt trail you will cross the Boundary Trail. If you turn left here you will be on the Bush Hog section of the Boundary Trail which is a great section to do some cantering or even galloping. It will become a little rocky eventually. Staying on Dear Creek Run you will come to a section fondly referred to as the Hoopy Doo Trail. This is an area with a lot of birms that we take kids on rides in 4 wheelers and they do a lot of "Hoopy Doo" yelling during this section. The trail will then come in contact with the Boundary Trail once again. You will take a sharp right and be on a narrow math going into the woods to stay on Deer Creek Run. The trail ends at the Stepping Creek trail. Take a left on Stepping Stone for an easier ride back to the Boundary Trail. Once you come to the Boundary Trail take a right to head back to the barn. If you take a right onto Stepping Stone you will have about 2 miles of trail to ride and this is currently the most challenging section of trails that we have.

Rock Pile

Moderate

Distance: .5 mile

Average Time: 15 minutes

This is a beautiful ride which wanders tightly through trees and a bamboo thicket. One end is starts on the Wooden Bridge Trail and the other is on the Boundary trail. This trail is considerate moderate as there are two stream crossings. When traveling from the Wooden Bridge trail you will be faced with a choice of which way to turn on the Boundary trail. Regardless of which way you travel, you will be faced with a hill and a creek crossing. For an easier way, turn right as the creek crossing is easier and you will go up a steep hill and be back at the Wood Bridge Trail. You can take Wooden Bridge for the easiest trip back to the pond or stay on Boundary for a longer ride and another creek crossing, which is an easy crossing. If you go left, you will quickly be presented with a more difficult creek crossing. Once you cross the creek you will soon cross over the Deer Creek Run trail.

Pond View

Moderate

Distance: .1 mile

Average Time: 5 minutes

This trail winds around the pond for some fantastic views! It is considered moderate due to a creek crossing and a muddy gulley you must cross. If you look at the terrain map below it appears that you actually go into the pond, WE WISH! However, you do not. The satellite image shows that you do not. Currently this trail connects Boundary trail on one end and the Power Line trail on the other. The Pong View Loop can be taken to make a circle and return back to the Boundary trail by the pond and connects to the Oak Valley trail.

Pick A Path

Easy

Distance: .4 mile

Average Time: 15 minutes

This trail itself is easy. Some of it winds through tight wooded areas. Other parts are wide enough to ride side by side. The wide areas are perfectly suited for cantering. This trail gives you some choices, thus the name, Pick A Path. The trail itself has no creek crossings. To keep this ride easy go down the Boundary trail from Paul's hill. Turn right onto Holly Haven and you will quickly be presented with one end of Pick A Path. CHOICE TIME: Take a right to go back to Holly Haven. When you get to Holly Haven go straight, not down the little hill, and head back towards the Boundary trail. If you take a left you will face a creek crossing. Second choice would be to head towards Big Rock Mt and Deer Creek. To get on Big Rock Mt you will need to cross a creek. For the easier ride, take Deer Creek and you will come back to Boundary (take a left on boundary for no creeks) or stay on Deer Creek to the end at Stepping Stone. At Stepping stone, take a left to avoid creeks and come back to Boundary.

Pond View Loop

Easy

Distance: .1 mile

Average Time: 5 seconds

This trail is simply a little loop that connects to Pond View, Oak valley and Power Line trails. It was not long enough to get enough waypoints for the GPS to accurately measure it! This loop is ideal for beginner riders as you can come down Oak Valley and ride around this loop and head back down Oak Valley. It is also an excellent loop for turning around and travelling back down Pond View.

Muck Bypass

Easy

Distance: 496 feet

The name says it all! The Pond View trail has a very bad spot that we really don't like and the horses like even less. This bad spot is on the Boundary end of Pond View near the dam. This bypass allows you to skip the bad MUCKY area. The trail itself is short but really fun as it has a lot of sharp turns and dips on the trail!

Camelot Crossing

Easy

Distance: .4 mile

Average Time: 10 minutes

One end of this trail starts on the Boundary trail just after you pass both entrances to Stepping Stone coming down Paul's Hill with the other end on Pine Ridge, just below its connecting point the Boundary trail, again on the Paul's Hill side. This is a very scenic trail with beautiful rock formations and huge pine trees.

Open Field

Easy

Distance: .2 mile

Average Time: 6 minutes

This is an easy trail which starts from the Paul's Hill section of the Boundary trail. Initially, the name is rather deceiving as the entire length of this trail is in deep woods which at times winds pretty tightly through the trees. At the end you reach your reward, and large open field that is completely surrounded by trees. This is an excellent area to do some cantering and even galloping in a field. When you enter the field and bear left aim for the center of the tree line at the far end, here you will find a section cut through which puts you back on the Boundary trail at the top of Paul's Hill. The length above does not figure in the distance traveled across the field to the exit back onto the Boundary trail.

Open Field 1

Distance .4 mile

Open Field 2

Distance .3

The Open Field trail ends in Open Field 1. If you follow the border of the field you will find an entrance through the pine trees to Open Field 2 or another one back to the Boundary trail. If you are in Open Field 2 you can exit by the white truck which will put you back on the Boundary trail. Open Field 2 contains some large remains of an old tank, so beware that this may spook your horse. You are free to go anywhere in these two fields and ride as you please.

Tower Falls

Easy

Distance: .4 mile

Average Time: 12 Minutes

This trail connects both ends of the Boundary trail. It goes along the arena and along some of the pastures. At one point you will pass thru an open area, just look for the markers on the trees on the other side to see where you need to go. Not long ago there was a microwave tower that was used to push WGN TV Station to a cable company. The tower was no longer used and when the tower fell it was in this general area. The building by the horse trailers is where the control room was for the tower and you will see some tower pieces around the property.

Florabrook Way

Easy

Distance .1 mile

This is a little detour you can take that you access off of the Boundary trail across from the Tower Falls trail end. This trail goes along Longtown Rd. and then will come back up to the Boundary trail. Be aware that there will be speeding cars passing by and some foolish people may blow their horns at you, so be prepared for a spooked horse.

Power Line

Easy

Distance: .7 mile

This trail starts near the vault toilet near the arena. It ends on the Pond View Loop trail. At the end you can ride around the Pond View Loop and get on the Oak Valley or Pond View trails. The Oak Valley trail is easy and will take you back to where you started. The Pond View trail has a stream crossing. This trail starts going along the drive and you will eventually be on the Power Line right-a-way along Longtown Rd. At this point it is pretty much straight with a couple little hills. It is a good area for trotting and perhaps some cantering, but keep in mind there are some limbs and stones that you will come across. You will come to another driveway and will turn left and will quickly enter the woods. It is a whole different ride at this point as you will now be in a deep wooded area.

Holly Haven

Intermediate

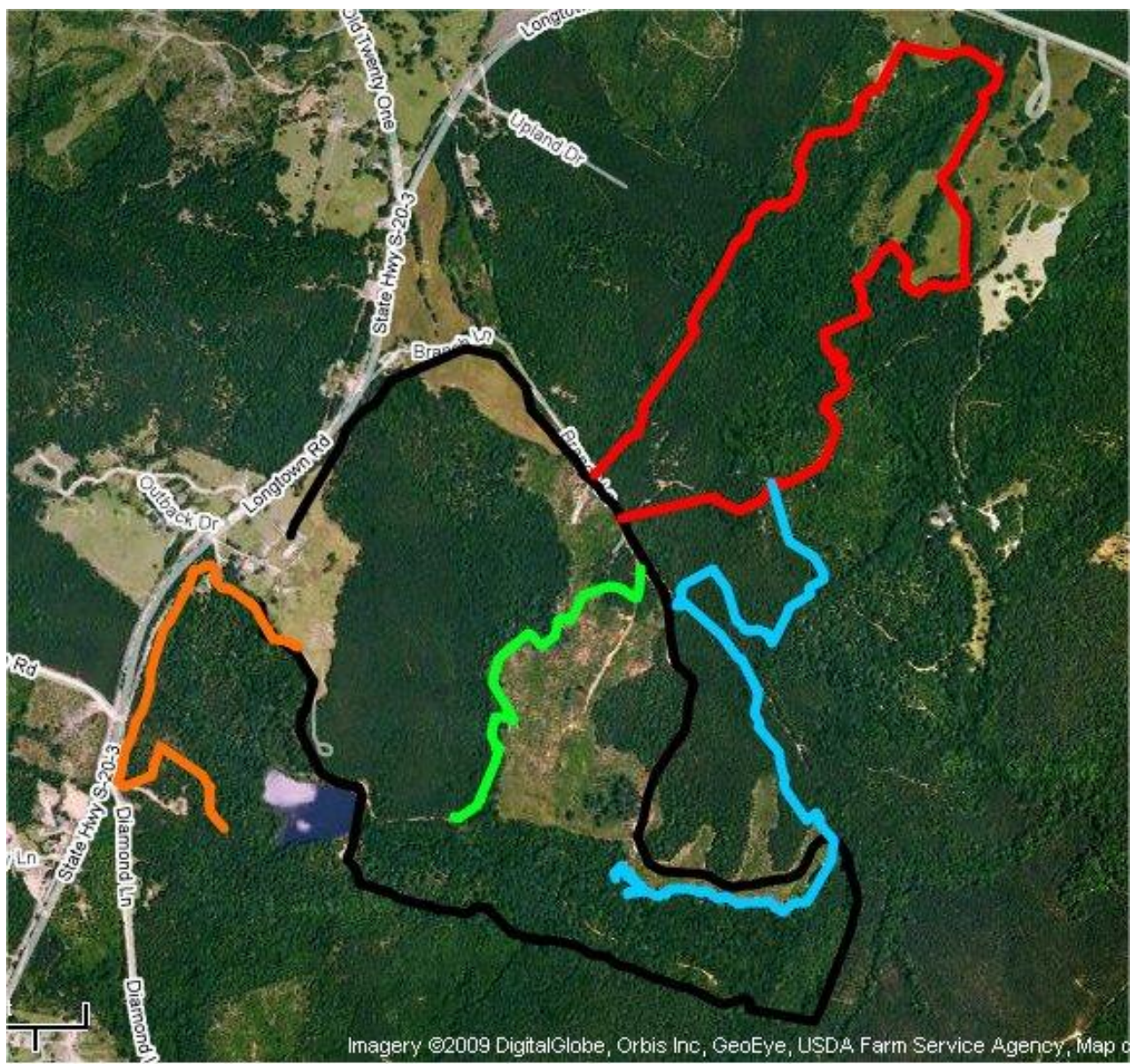
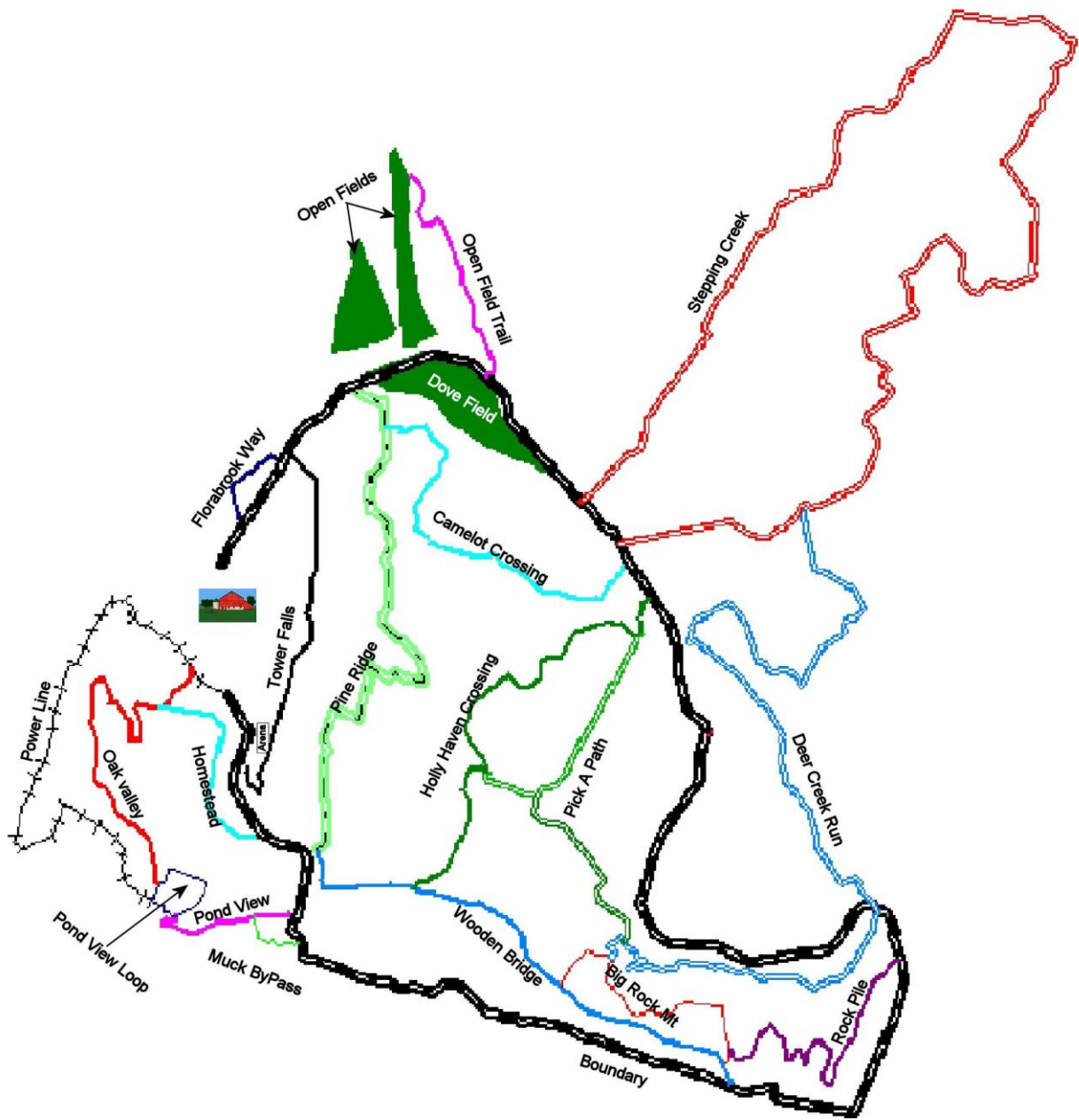
Distance .6 mile

Average Time: 15 minutes

This trail joins the Wooden Bridge trail and the Boundary trail. A good portion of this trail winds its way through a bunch of Holly trees. This trail has a couple tricky stream crossings which is why we have classified this trail as an Intermediate. Be prepared to dismount your horse to get them over the stream crossings and be prepared for you horse to just jump the crossing.

Summary

20 Trails
12.2 Miles of Trails



Imagery ©2009 DigitalGlobe, Orbis Inc, GeoEye, USDA Farm Service Agency, Map d